

# Willoughby Plat No. 15, a PUD(r)

BEING A PART OF AN ABANDONED PORTION OF PORT SEWALL, A SUBDIVISION OF LOTS 3 AND 4 OF THE MILES OR HANSON GRANT, MARTIN COUNTY, FLORIDA, AS RECORDED IN PLAT BOOK 3, PAGE 7, PUBLIC RECORDS, PALM BEACH COUNTY (NOW MARTIN COUNTY), FLORIDA

FEBRUARY 1998

### CLERK'S RECORDING CERTIFICATE

I, MARSHA STILLER, CLERK OF THE CIRCUIT COURT OF MARTIN COUNTY, FLORIDA, HEREBY CERTIFY THAT THIS PLAT WAS FILED FOR RECORD IN

PLAT BOOK 14, PAGE 46, MARTIN COUNTY, FLORIDA, PUBLIC RECORDS THIS 30 DAY OF March, 1998

MARSHA STILLER, CLERK OF THE CIRCUIT COURT MARTIN COUNTY, FLORIDA.

FILE NUMBER 6287901 BY [Signature] DEPUTY CLERK

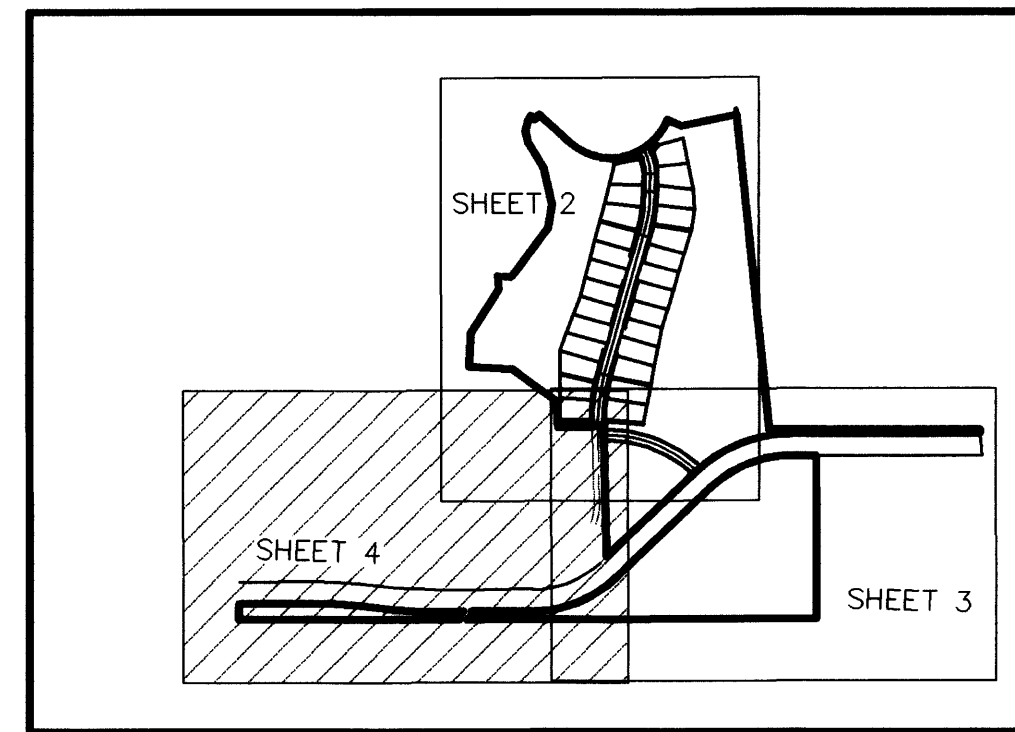
SUBDIVISION PARCEL CONTROL NO.

### SURVEYOR'S NOTES

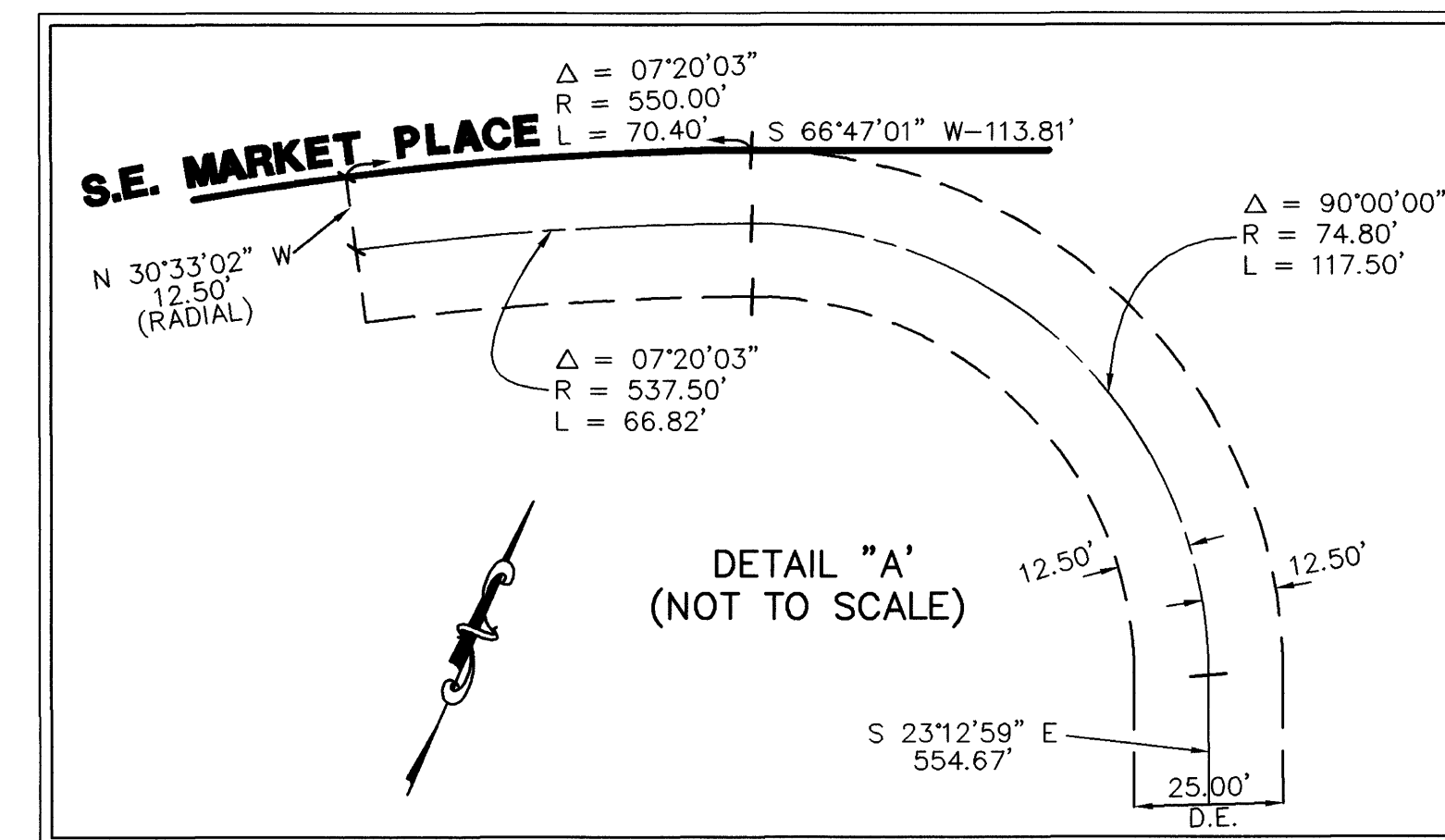
- THIS PLAT, AS RECORDED IN ITS ORIGINAL FORM IN THE PUBLIC RECORDS, IS THE OFFICIAL DEPICTION OF THE SUBDIVIDED LANDS DESCRIBED HEREON AND WILL IN NO CIRCUMSTANCES BE SUPPLANTED IN AUTHORITY BY ANY OTHER FORM OF THE PLAT, WHETHER GRAPHIC OR DIGITAL.
- IN THE EVENT THAT MARTIN COUNTY DISTURBS THE SURFACE OF A PRIVATE STREET DUE TO MAINTENANCE, REPAIR OR REPLACEMENT OF A PUBLIC IMPROVEMENT LOCATED THEREIN, THEN THE COUNTY SHALL BE RESPONSIBLE FOR RESTORING THE STREET SURFACE ONLY TO THE EXTENT WHICH WOULD BE REQUIRED IF THE STREET WERE A PUBLIC STREET, IN ACCORDANCE WITH COUNTY SPECIFICATIONS.
- THERE SHALL BE NO BUILDING OR ANY OTHER KIND OF CONSTRUCTION OR TREES OR SHRUBS PLACED ON DRAINAGE AND ACCESS EASEMENTS.
- THERE SHALL BE NO BUILDING OR OTHER PERMANENT STRUCTURES OR TREES PLACED ON UTILITY EASEMENTS.
- BEARINGS SHOWN HEREON ARE REFERENCED TO THE NORTH LINE OF LOT 16, WILLOUGHBY PLAT NO. 14 AS RECORDED IN PLAT BOOK 14, PAGE 33, PUBLIC RECORDS OF MARTIN COUNTY, FLORIDA. SAID LINE BEARS NORTH 65°34'54" EAST.

### LEGEND

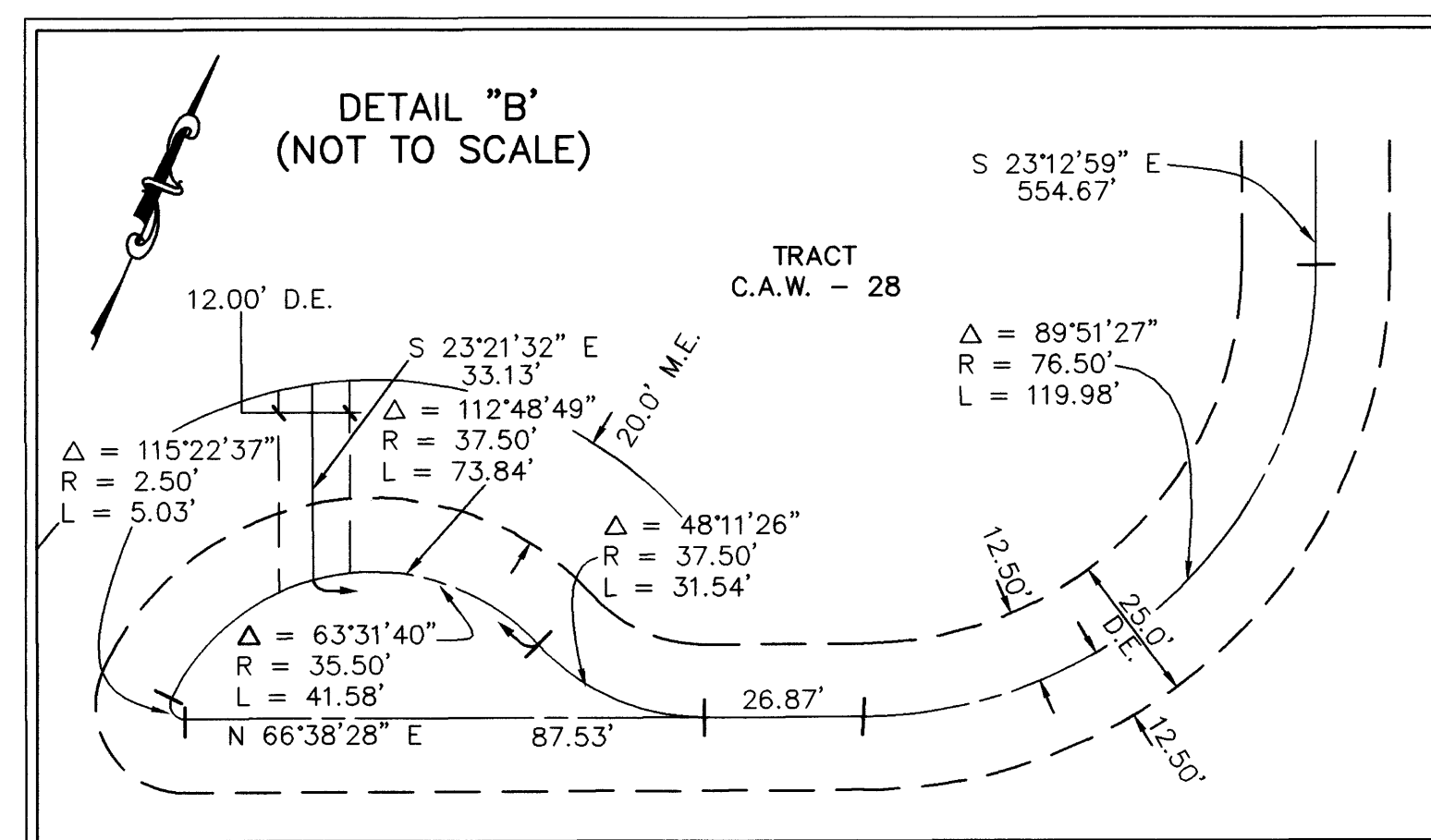
- Δ = DELTA (CENTRAL ANGLE)
- R = RADIUS
- L = ARC LENGTH
- CB = CHORD BEARING
- C.A. = COMMON AREA
- G.C. = GOLF COURSE TRACT
- G.C.W. = GOLF COURSE WATER TRACT
- A.E. = ACCESS EASEMENT
- D.E. = DRAINAGE EASEMENT
- M.E. = MAINTENANCE EASEMENT
- U.E. = UTILITY EASEMENT
- LB = LAND SURVEY BUSINESS
- PSM = PROFESSIONAL SURVEYOR AND MAPPER
- PRM = PERMANENT REFERENCE MONUMENT
- PCP = PERMANENT CONTROL POINT
- P.C. = POINT OF CURVATURE
- P.T. = POINT OF TANGENCY
- C.L. = CENTER LINE
- = FOUND PERMANENT REFERENCE MONUMENT (P.R.M.) 4"x4" CONCRETE MONUMENT WITH DISK LABELED "PRM, LB 3881"
- = SET PERMANENT REFERENCE MONUMENT (P.R.M.) 4"x4" CONCRETE MONUMENT WITH DISK LABELED "PRM, GCY, INC. LB 4108, PSM 4864"
- = FOUND PERMANENT CONTROL POINT (PCP) P.K. NAIL & WASHER LABELED "PCP, LB 4108"
- = SET PERMANENT CONTROL POINT (PCP) P.K. NAIL & WASHER LABELED "PCP, LB 4108"



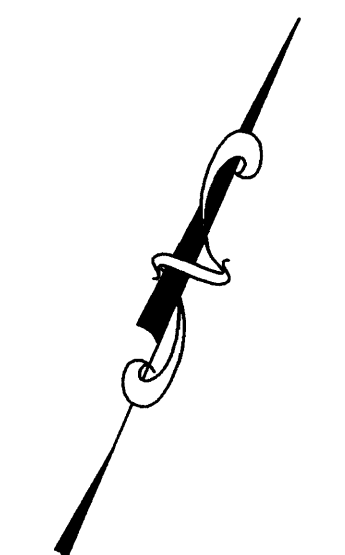
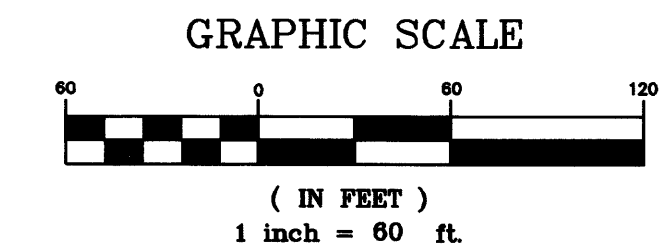
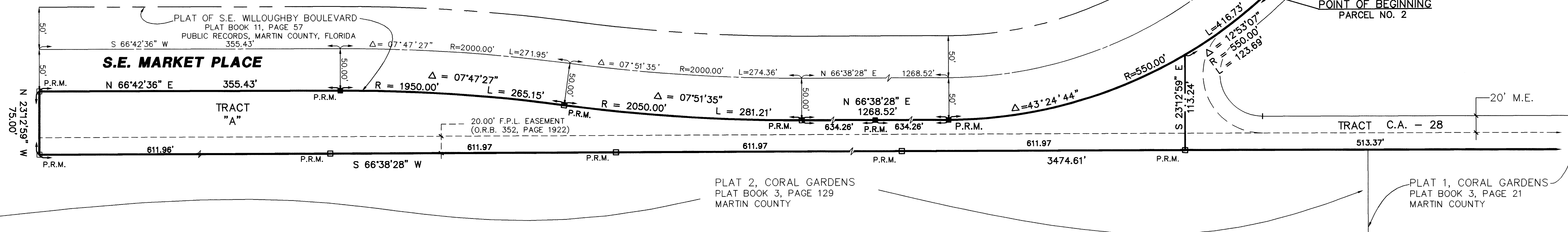
KEY MAP



DETAIL "A" (NOT TO SCALE)



DETAIL "B" (NOT TO SCALE)



### NOTICE:

THERE MAY BE ADDITIONAL RESTRICTIONS THAT ARE NOT RECORDED ON THIS PLAT THAT MAY BE FOUND IN THE PUBLIC RECORDS OF THIS COUNTY.



PROFESSIONAL SURVEYORS AND MAPPERS

1505 S.W. MARTIN HIGHWAY P.O. BOX 1469  
PALM CITY, FLORIDA 34991 (561-286-8083)

CERTIFICATE OF AUTHORIZATION LB 4108